

Avex® 1604

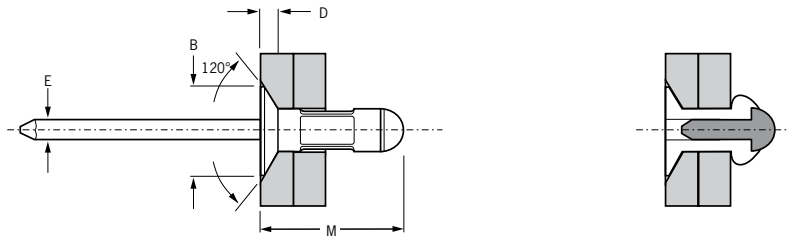
For installation information please refer to the tooling overview and manuals on our website www.avdel-global.com.
 Pour les conditions de pose, merci de vous référer à la description de l'outil et aux manuels disponibles sur notre site Web.
 Angaben zur Verarbeitung entnehmen Sie bitte der Geräteübersicht und den Betriebsanleitungen auf unserer Website.
 Per informazioni sull'installazione preghiamo consultare i manuali e la panoramica degli attrezzi sul nostro sito web.
 Para ver información sobre máquinas de colocación, consulte nuestra página web, apartados visión general de máquinas y manuales.



English	Français	Deutsch	Italiano	Español
120° Countersunk head	120° Tête fraisée	120° Senkkopf	120° Testa svasata	120° Cabeza avellanada
Body: Aluminium alloy* (2.5 % Mg) Natural	Corps: Alliage d'aluminium* (2.5% Mg) Brut	Hülse: Aluminium* (2.5 % Mg) Blank	Corpo: Lega di alluminio* (2.5% Mg) Nessuna finitura	Cuerpo: Aluminio* (2.5% Mg) Natural
Stem: Low carbon steel**	Tige: Acier bas carbone**	Dorn: Stahl**	Gambo: Acciaio a basso tenore di carbonio**	Vástago: Acero bajo en carbono**
Zinc coated	Revêtement zingué	Verzinkt	Zincato	Zincado

*: AA 5052, DIN 1725, AlMg2.5, Werkstoff 3.3523

** : BS3111 Type 0, SAE 1015/1018/1022, DIN 1654, Cq15/Cq22



ø	[Cross-section diagram]		[Thread profile diagram]		M	B	D	E	[Torque diagram]	[Torque diagram]	Part No/ref
	nom.	min.	max.	min.							
1/8" (3.2 mm)	.093	.250	.128	.133	.48	.217	.050	.0695	155	205	01604-00412
	.155	.312			.53						01604-00414
	.217	.375			.58						01604-00416
5/32" (4.0 mm)	.109	.312	.161	.166	.56	.257	.052	.0835	255	300	01604-00514
	.142	.346			.59						01604-00515
3/16" (4.8 mm)	.125	.312	.193	.198	.61	.351	.069	.1115	350	530	01604-00615
	.250	.500			.80						01604-00621

all dimensions in inches / en pouces / alle Maße in Zoll / in pollici / en pulgadas

1) typical values / valeurs moyennes / typische Werte / Valori tipici / resistencias máximas recomendadas



An Acument™ Global Technologies Company

www.avdel-global.com

© 2007 Acument Intellectual Properties, LLC

Avex® is a trademark of Avdel UK Limited

05a.2007

Data shown is subject to change without prior notice as a result of continuous product development and improvement policy.
 Your local Avdel representative is at your disposal should you need to confirm latest information.