

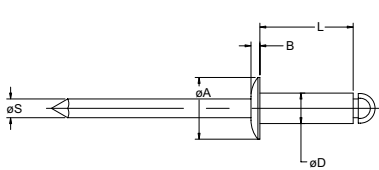
N Rivet SSPS / SSLS / SSCS



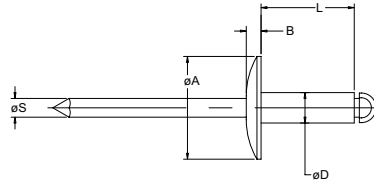
For installation information please refer to the tooling overview and manuals on our website www.avdel-global.com.
 Pour les conditions de pose, merci de vous référer à la description de l'outil et aux manuels disponibles sur notre site Web.
 Angaben zur Verarbeitung entnehmen Sie bitte der Geräteübersicht und den Betriebsanleitungen auf unserer Website.
 Per informazioni sull'installazione preghiamo consultare i manuali e la panoramica degli attrezzi sul nostro sito web.
 Para ver información sobre máquinas de colocación, consulte nuestra página web, apartados visión general de máquinas y manuales.

English	Français	Deutsch	Italiano	Español
Body: Steel Zinc plated	Corps: Acier Revêtement zingué	Hülse: Stahl Verzinkt	Corpo: Acciaio Zincati	Cuerpo: Acero Zincado
Stem: Steel Natural	Tige: Acier Brut	Dorn: Stahl Blank	Gambo: Acciaio Nessuna finitura	Vástago: Acero Natural

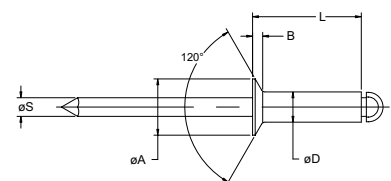
IFI 114 Grade 30



N Rivet SSPS
 Protruding head / Tête bombée /
 Flachrundkopf / Testa tonda /
 Cabeza alomada



N Rivet SSLS
 Large flange / Tête large /
 Flachrundkopf, extragroß /
 Testa larga / Cabeza ancha



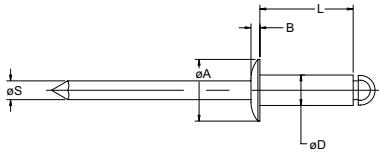
N Rivet SSCS
 Countersunk / Tête fraisée
 Senkkopf / Testa svasata
 Cabeza avellanada

ø nom.	min. max.		min. max.		ø D max.	L max.	ø S	SSPS Protruding head			SSLS Large flange			SSCS Countersunk		
	min.	max.	min.	max.				ø A	B max.	Part No. /ref SSPS-	ø A	B max.	Part No. /ref SSLS-	ø A	B ref.	Part No. /ref SSCS-
3/32" (2.4 mm)	.020	.125	.097	.100	.093	.250	.057	.188	.032	-03-02			.174	.027	-03-02	
	.126	.250								-03-04					-03-04	
	.251	.375								-03-06					-03-06	
1/8" (3.2 mm)	.020	.062	.129	.133	.125	.212	.076	.250	.040	-04-01	.375	.065	.220	.031	-04-02	
	.063	.125								-04-02						
	.126	.187								-04-03						
	.188	.250								-04-04						
	.251	.312								-04-04						
	.313	.375								-04-05						
	.376	.437								-04-06						
	.438	.500								-04-07						
	.501	.562								-04-08						
5/32" (4.0 mm)	.020	.125	.160	.164	.156	.300	.095	.312	.050	-05-02	.468	.075	.281	.040	-05-04	
	.126	.250								-05-04						
	.251	.375								-05-06						
	.376	.500								-05-08						
	.501	.625								-05-10						
3/16" (4.8 mm)	.020	.125	.192	.196	.187	.325	.114	.375	.060	-06-02	.625	.092	.348	.050	-06-04	
	.126	.250								-06-04						
	.251	.375								-06-06						
	.376	.500								-06-06						
	.501	.625								-06-08						
	.626	.750								-06-10						
	.751	.875								-06-12						
	.876	1.000								-06-14						

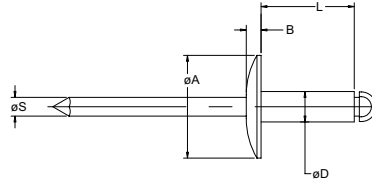
all dimensions in inches / en pouces / alle Maße in Zoll / in pollici / en pulgadas



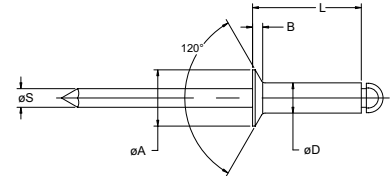
N Rivet SSPS / SSLS / SSCS



N Rivet SSPS
Protruding head / Tête bombée /
Flachrundkopf / Testa tonda /
Cabeza alomada



N Rivet SSLS
Large flange / Tête large /
Flachrundkopf, extragroß /
Testa larga / Cabeza ancha



N Rivet SSCS
Countersunk / Tête fraisée
Senkkopf / Testa svasata
Cabeza avellanada

ø nom.	[Cross-section diagram]		[Thread diagram]		ø D	L max.	ø S	SSPS Protruding head			SSLS Large flange		SSCS Countersunk		
	min.	max.	min.	max.				ø A	B max.	Part No. /ref SSPS-	ø A	B max.	Part No. /ref SSLS-	ø A	B max.
1/4" (6.4 mm)	.020	.125	.257	.261	.250	.375	.151	.500	.080	.750	.107	-08-02	.468	.071	-08-04
	.126	.250										-08-04			-08-04
	.251	.375										-08-06			-08-06
	.376	.500										-08-08			-08-08
	.501	.625										-08-10			-08-10
	.626	.750										-08-12			-08-12
	.751	.875										-08-14			-08-14
	.876	1.000										-08-16			-08-16

all dimensions in inches / en pouces / alle Maße in Zoll / in pollici / en pulgadas

ø nom.	[Diagram 1]	[Diagram 2]
	lbf min. ¹⁾	lbf min. ¹⁾
3/32" (2.4 mm)	130	170
1/8" (3.2 mm)	260	310
5/32" (4.0 mm)	370	470
3/16" (4.8 mm)	540	680
1/4" (6.4 mm)	1000	1240

1) Tested per IFI 135 Specification 2.1 and 2.2
Testé par spécification IFI 135 2.1 et 2.2
Getestet nach IFI 135 Spezifikation 2.1 und 2.2
Provato secondo specifica IFI 135 2.1 e 2.2
Comprobado según especificación IFI 135 2.1 y 2.2

