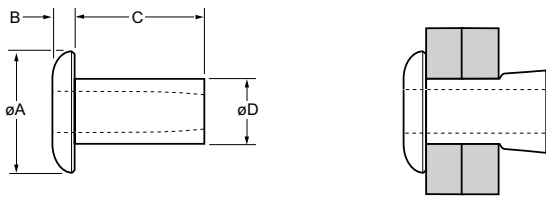


Chobert® 1125 / 1131 /1135



For installation information please refer to the tooling overview and manuals on our website www.avdel-global.com.
 Pour les conditions de pose, merci de vous référer à la description de l'outil et aux manuels disponibles sur notre site Web.
 Angaben zur Verarbeitung entnehmen Sie bitte der Geräteübersicht und den Betriebsanleitungen auf unserer Website.
 Per informazioni sull'installazione preghiamo consultare i manuali e la panoramica degli attrezzi sul nostro sito web.
 Para ver información sobre máquinas de colocación, consulte nuestra página web, apartados visión general de máquinas y manuales.

English	Français	Deutsch	Italiano	Español
Dome head	Tête plate	Flachrundkopf	Testa tonda	Cabeza alomada
Aluminium alloy	Alliage d'aluminium	Aluminium	Lega di alluminio	Aluminio
Natural	Brut	Blank	Nessuna finitura	Natural



ø	Ø		Ø		øA	B	C	øD	Fasteners per pod/ Nombre de rivets par chargeur / Niete pro Magazin/ Rivetti per caricatore / Uds./carga	Aluminium		
	min.	max.	min.	max.						± .012	max.	± .007
nom.	min.	max.	min.	max.	± .012	max.	± .007	max.	± 1	Part No/ref	Part No/ref	Part No/ref
3/32"		.062	.098	.1005	.156	.037	.125	.0975	73	01125-00304	01131-00304	01135-00304
	.062	.125					.187		52	01125-00306	01131-00306	01135-00306
	.125	.187					.250		41	01125-00308	01131-00308	01135-00308
	.187	.250					.312		33	01125-00310	01131-00310	01135-00310
	.250	.312					.375		28		01131-00312	
	.312	.375					.437		24		01131-00314	
	.375	.437					.500		22		01131-00316	
1/8"		.062	.129	.1315	.205	.045	.125	.1285	71	01125-00404	01131-00404	01135-00404
	.062	.125					.187		51	01125-00406	01131-00406	01135-00406
	.125	.187					.250		39	01125-00408	01131-00408	01135-00408
	.187	.250					.312		32	01125-00410	01131-00410	01135-00410
	.250	.312					.375		27	01125-00412	01131-00412	01135-00412
	.312	.375					.437		23	01125-00414		
5/32"	.062	.125	.161	.164	.245	.058	.187	.1595	47	01125-00506	01131-00506	01135-00506
	.125	.187					.250		38	01125-00508	01131-00508	01135-00508
	.187	.250					.312		31	01125-00510	01131-00510	01135-00510
	.250	.312					.375		27	01125-00512	01131-00512	01135-00512
	.312	.375					.437		23	01125-00514	01131-00514	01135-00514
	.375	.437					.500		21	01125-00516	01131-00516	01135-00516
	.437	.500					.567			01125-00518	01131-00518	01135-00518
	.500	.562					.630			01125-00520	01131-00520	

all dimensions in inches / en pouces / alle Maße in Zoll / in pollici / en pulgadas



www.avdel-global.com

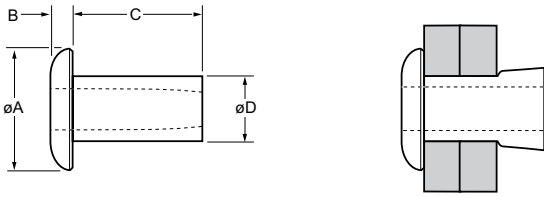
© 2011 Infastech

Chobert® is a trademark of Avdel UK Limited

06.2011, page 1/2

Data shown is subject to change without prior notice as a result of continuous product development and improvement policy.
 Your local Avdel representative is at your disposal should you need to confirm latest information.

Chobert® 1125 / 1131 /1135



ø					øA	B	C	øD	Fasteners per pod/ Nombre de rivets par chargeur / Niete pro Magazin/ Rivetti per caricatore / Uds./carga	Aluminium					
										2.5 % Mg AA 5052 DIN 1725 AlMg2.5 Werkstoff 3.3523	3.5 % Mg BS 1473 5154A DIN 1725 AlMg3.5 Werkstoff 3.3535	5 % Mg BS 1473 5056A DIN 1725 AlMg5 Werkstoff 3.3555			
nom.	min.	max.	min.	max.	± .012	max.	± .007	max.	± 1	Part No/ref	Part No/ref	Part No/ref			
3/16"		.062	.191	.194	.339	.071	.1895	50			01131-00605				
	.062	.125									.219	38	01125-00607	01131-00607	01135-00607
	.125	.187									.281	33	01125-00609	01131-00609	01135-00609
	.187	.250									.344	28	01125-00611	01131-00611	01135-00611
	.250	.312									.406	24	01125-00613	01131-00613	01135-00613
	.312	.375									.469	21	01125-00615	01131-00615	01135-00615
	.375	.437									.531	19	01125-00617	01131-00617	01135-00617
	.437	.500									.594	17	01125-00619	01131-00619	01135-00619
1/4"	.125	.187	.250	.253	.401	.084	.2485	32			01131-00809	01135-00809			
	.187	.250									.344	27		01131-00811	01135-00811
	.250	.312									.406	24		01131-00813	01135-00813
	.312	.375									.469	21		01131-00815	01135-00815
	.375	.437									.531	19		01131-00817	01135-00817
	.437	.500									.594	17		01131-00819	01135-00819
	.500	.562									.656	16		01131-00821	
	.562	.625									.719	14		01131-00823	
	.625	.687									.781	13		01131-00825	

all dimensions in inches / en pouces / alle Maße in Zoll / in pollici / en pulgadas

ø			
	Series 01125	Series 01131	Series 01135
nom.	lbf ¹⁾	lbf ¹⁾	lbf ¹⁾
3/32"	67	112	112
1/8"	135	180	180
5/32"	225	360	360
3/16"	337	450	450
1/4"		607	607

1) typical values / valeurs moyennes / typische Werte / Valori tipici / resistencias máximas recomendadas

