

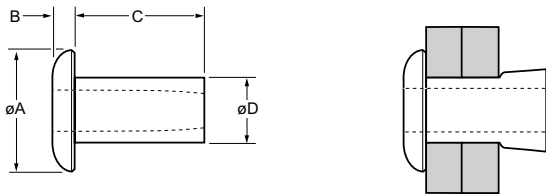
Chobert® 1162



For installation information please refer to the tooling overview and manuals on our website www.avdel-global.com.
 Pour les conditions de pose, merci de vous référer à la description de l'outil et aux manuels disponibles sur notre site Web.
 Angaben zur Verarbeitung entnehmen Sie bitte der Geräteübersicht und den Betriebsanleitungen auf unserer Website.
 Per informazioni sull'installazione preghiamo consultare i manuali e la panoramica degli attrezzi sul nostro sito web.
 Para ver información sobre máquinas de colocación, consulte nuestra página web, apartados visión general de máquinas y manuales.

| English | Français | Deutsch | Italiano | Español |
|--------------------------------|-----------------------------------|--------------------------|---------------------------------|------------------------|
| Low profile head | Tête profil bas | Flachkopf | Testa basso profilo | Cabeza perfil bajo |
| Aluminium alloy* (2.5 % Mg) | Alliage d'aluminium* (2.5% Mg) | Aluminium* (2.5 % Mg) | Lega di alluminio* (2.5% Mg) | Aluminio* (2.5% Mg) |
| Natural | Brut | Blank | Nessuna finitura | Natural |

*: AA 5052 DIN 1725 AlMg2.5 Werkstoff 3.3523



| ø | | | | | øA | B | C | øD | | Fasteners per pod/ Nombre de rivets par chargeur / Niete pro Magazin/ Rivetti per carica- tore / Uds./carga | Part No/ref | |
|-------|------|------|------|------|-------|------|------|------|-------|--|-------------|-------------|
| | nom. | min. | max. | min. | | | | | | | | max. |
| 1/8" | | | | | | | | | | | 71 | 01162-00404 |
| | | .062 | .125 | | | | | .129 | | | 51 | 01162-00406 |
| | | .125 | .187 | | | | | .192 | | | 39 | 01162-00408 |
| | | .187 | .250 | .129 | .1315 | .253 | .041 | .254 | .1275 | 134 | 32 | 01162-00410 |
| | | .250 | .312 | | | | | .317 | | | 27 | 01162-00412 |
| | | .312 | .375 | | | | | .379 | | | 23 | 01162-00414 |
| | | .375 | .437 | | | | | .441 | | | 21 | 01162-00416 |
| | | | | | | | | .503 | | | | |
| 5/32" | | .062 | .125 | | | | | .184 | | | 47 | 01162-00506 |
| | | .093 | .155 | | | | | .215 | | | | 01162-00507 |
| | | .125 | .187 | | | | | .247 | | | 38 | 01162-00508 |
| | | .187 | .250 | .161 | .164 | .312 | .051 | .309 | .1595 | 224 | 31 | 01162-00510 |
| | | .250 | .312 | | | | | .372 | | | 27 | 01162-00512 |
| | | .312 | .375 | | | | | .434 | | | 23 | 01162-00514 |
| | | .375 | .437 | | | | | .497 | | | 21 | 01162-00516 |
| | | | | | | | | | | | | |
| 3/16" | | .062 | .125 | | | | | .172 | | | 50 | 01162-00605 |
| | | .062 | .125 | | | | | .223 | | | 38 | 01162-00607 |
| | | .125 | .187 | | | | | .285 | | | 33 | 01162-00609 |
| | | .187 | .250 | .191 | .194 | .387 | .061 | .348 | .1895 | 337 | 28 | 01162-00611 |
| | | .250 | .312 | | | | | .410 | | | 24 | 01162-00613 |
| | | .312 | .375 | | | | | .473 | | | 21 | 01162-00615 |
| | | .375 | .437 | | | | | .535 | | | 19 | 01162-00617 |
| | | .437 | .500 | | | | | .598 | | | 17 | 01162-00619 |

all dimensions in inches / en pouces / alle Maße in Zoll / in pollici / en pulgadas

1) typical values / valeurs moyennes / typische Werte / Valori tipici / resistencias máximas recomendadas



www.avdel-global.com

© 2011 Infastech

Chobert® is a trademark of Avdel UK Limited

06.2011

Data shown is subject to change without prior notice as a result of continuous product development and improvement policy.
 Your local Avdel representative is at your disposal should you need to confirm latest information.