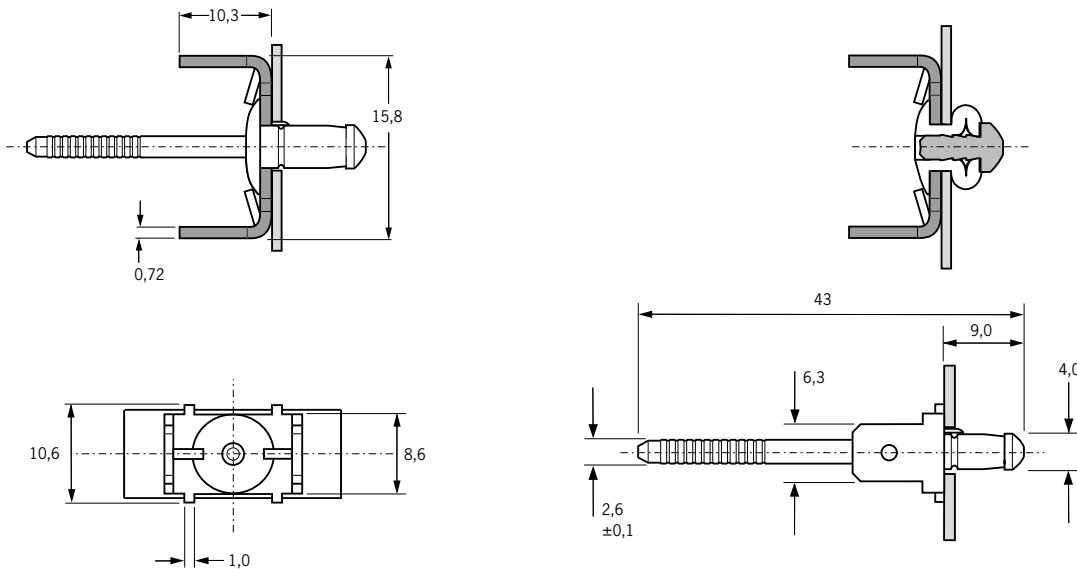


Earth Tab Rivet BN11



English	Français	Deutsch	Italiano	Español
Earthing/grounding point	Rivet masse	Erdungsniet	Punto di messa a terra	Toma de tierra
Body: Low carbon steel*	Corps: Acier bas carbone*	Hülse: Stahl*	Corpo: Acciaio a basso tenore di carbonio*	Cuerpo: Acero bajo en carbono*
Zinc plated Clear trivalent passivated	Revêtement zingué Passivation claire trivalente	Verzinkt Klar chromatiert, Cr6-frei	Zincato Passivazione chiara trivalente	Zincado Pasivado claro trivalente
Stem: medium carbon boron steel**	Tige: Acier au carbone**	Dorn: Stahl**	Gambo: Acciaio a medio tenore di carbonio**	Vástago: Acero medio en carbono**
Zinc plated Clear trivalent passivated	Revêtement zingué Passivation claire trivalente	Verzinkt Klar chromatiert, Cr6-frei	Zincato Passivazione chiara trivalente	Zincado Pasivado claro trivalente
Tab: Brass***	Languette: Laiton***	Fahne: Messing***	Linguette: Ottone***	Lengüeta: Latón***
*: SAE 1008, Werkstoff 1.0313 **: SAE 1045, Werkstoff 1.0517 ***: CuZn 30, DIN 17660				



ø				Part No/ref
	nom.	min.		
4.0 (5/32")	1.0	1.5	± 0.05 5.2	OBN11-00509

all dimensions in mm / en millimètre / alle Maße in mm / in millimetri / en milímetros



An Acument™ Global Technologies Company

www.avdel-global.com

© 2009 Acument Intellectual Properties, LLC

03.2009

Data shown is subject to change without prior notice as a result of continuous product development and improvement policy.
Your local Avdel representative is at your disposal should you need to confirm latest information.