

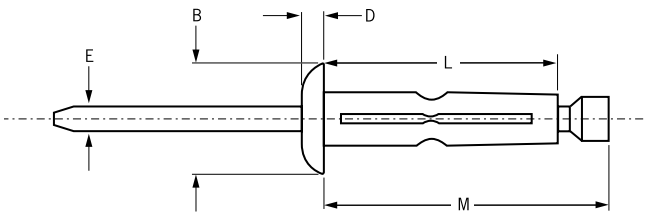
Klamp-Tite® BAPKTR

For installation information please refer to the tooling overview and manuals on our website www.avdel-global.com.
 Pour les conditions de pose, merci de vous référer à la description de l'outil et aux manuels disponibles sur notre site Web.
 Angaben zur Verarbeitung entnehmen Sie bitte der Geräteübersicht und den Betriebsanleitungen auf unserer Website.
 Per informazioni sull'installazione preghiamo consultare i manuali e la panoramica degli attrezzi sul nostro sito web.
 Para ver información sobre máquinas de colocación, consulte nuestra página web, apartados visión general de máquinas y manuales.



English	Français	Deutsch	Italiano	Español
Protruding head	Tête bombée	Flachrundkopf	Testa tonda	Cabeza alomada
Body: Aluminium alloy* Wax lubricated	Corps: Alliage d'aluminium* Lubrifié	Hülse: Aluminium* Gewachst	Corpo: Lega di alluminio* Lubrificato	Cuerpo: Aluminio* Lubricado
Stem: Aluminium alloy** Wax lubricated	Tige: Alliage d'aluminium** Lubrifié	Dorn: Aluminium** Gewachst	Gambo: Lega di alluminio** Lubrificato	Vástago: Aluminio** Lubricado

*: 5056 **: 7075



ø	[Cross-section diagram]		[Thread diagram]		M	B	D	L	E	[Torque diagram]	[Resistance diagram]	Part No/ref		
	nom.	min.	max.	min.									max.	max.
4.8 (3/16")	1.27	6.35	5.18	5.31	30.74	11.30	2.24	22.61	2.62	3.1	2.0	BAPKTR-06-04		
	4.75	9.53			33.02			25.02					BAPKTR-06-06	
	9.53	14.27			36.32			28.45						BAPKTR-06-09
	14.27	19.05			41.15			33.02						
6.4 (1/4")	1.52	6.35	6.40	6.65	33.02	14.22	2.87	23.50	3.45	5.5	3.1	BAPKTR-08-04		
	4.75	9.53			36.07			26.67				BAPKTR-08-06		

all dimensions in mm / en millimètres / alle Maße in mm / in millimetri / en milímetros

1) typical values / valeurs moyennes / typische Werte / Valori tipici / resistencias máximas recomendadas

Option:

A synthetic rubber washer can be ordered to fit under protruding head fasteners e.g.: BAPKTR-06W-06

Une rondelle en caoutchouc disposée sous la tête peut être commandée ex : BAPKTR-06W-06

Flachrundkopf mit Unterkopf-Gummidichtung ist ebenfalls verfügbar, z.B. BAPKTR-06W-06

Testa tonda con una guarnizione di gomma e disponibile, p. e. BAPKTR-06W-06

Para el sellado de la cabeza hay una version con junta de goma sintética, p.ej: BAPKTR-06W-06



An Acument™ Global Technologies Company

www.avdel-global.com

© 2007 Acument Intellectual Properties, LLC

Klamp-Tite® is a trademark of Acument Intellectual Properties, LLC

05a.2007

Data shown is subject to change without prior notice as a result of continuous product development and improvement policy.
 Your local Avdel representative is at your disposal should you need to confirm latest information.