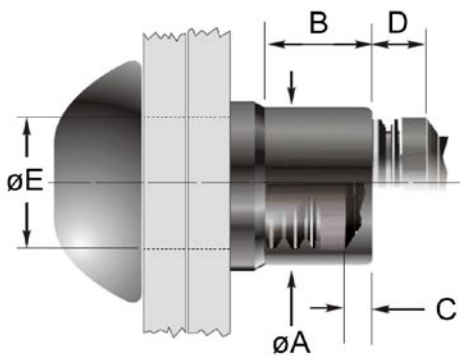


Avdelok® LD - Installed Inspection Data

Fiche de contrôle de pose/ Kontrolldaten des gesetzten Bolzens
Controllo dati di rivettatura/ Datos de control del remachado



Dim.	English	Français	Deutsch	Italiano	Español
øA	Swaged dia.	Dia. après sertissage	ø verpresster Schließring	Diametro estrusione	Diámetro extruido
B	Swaged length	Hauteur après sertissage	Länge verpresster Schließring	Lunghezza estrusione	Longitud extruida
C	Pin intrusion	Retrait de la tige	Bolzenabriss innerhalb Schließring	Intrusione perno	Longitud del pin que se introduce
D	Pin protrusion	Dépassement de la tige	Bolzenabriss außerhalb Schließring	Protrusione perno	Longitud del pin que sobresale
øE	Hole dia.	Dia. de trou	Loch-ø	Diametro del foro	Diámetro del agujero



Metric Dimensions (mm)

ø nom.	øA max.	B min.	C max.	D max.	øE max.
12.7	18.62	10.31	1.60	9.50	14.3
15.9	23.27	15.88			17.5
19.1	28.19	16.94			20.7
22.2	32.56	19.35			23.8
25.4	37.21	22.23			27.0
28.6	41.81	23.60			30.2

Imperial Dimensions (inch)

ø nom.	øA max.	B min.	C max.	D max.	øE max.
1/2"	.733	.406	.063	.375	.563
5/8"	.916	.625			.689
3/4"	1.110	.667			.813
7/8"	1.282	.762			.938
1"	1.465	.875			1.063
1 1/8"	1.646	.929			1.189



An Acument™ Global Technologies Company

www.avdel-global.com

© 2010 Acument Intellectual Properties, LLC

Avdelok® is a trademark of Avdel UK Limited

02.2010

Data shown is subject to change without prior notice as a result of continuous product development and improvement policy.
Your local Avdel representative is at your disposal should you need to confirm latest information.