

Avsert® 1117

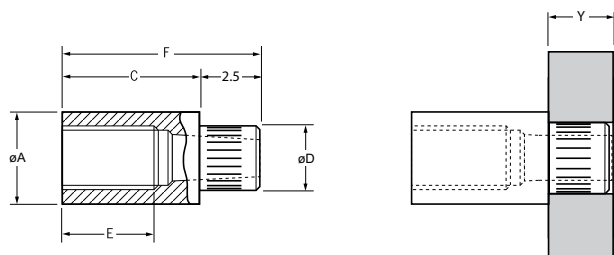


For installation information please refer to the tooling overview and manuals on our website www.avdel-global.com.
 Pour les conditions de pose, merci de vous référer à la description de l'outil et aux manuels disponibles sur notre site Web.
 Angaben zur Verarbeitung entnehmen Sie bitte der Geräteübersicht und den Betriebsanleitungen auf unserer Website.
 Per informazioni sull'installazione preghiamo consultare i manuali e la panoramica degli attrezzi sul nostro sito web.
 Para ver información sobre máquinas de colocación, consulte nuestra página web, apartados visión general de máquinas y manuales.

English	Français	Deutsch	Italiano	Español
Short spigot	Pion court	Kurzer Schaft	Piedino corto	Espiga corta
Brass*	Laiton*	Kupfer-Zink Legierung*	Ottone*	Latón*
Tin plated**	Étamé**	verzinkt**	Stagnato**	Estañado**

*: CuZn38Pb1.5 (ROHS conform)

** : ROHS conform; Avdel recommends tin plated parts are installed within 24 months from the date they were produced / Avdel conseille d'utiliser les pièces en laiton étamé sous un délai de 24 mois après la date de production / Avdel empfiehlt, verzinnte Niete innerhalb 24 Monaten nach Produktionsdatum zu verarbeiten / Avdel raccomanda di utilizzare i prodotti stagnati entro 24 mesi a decorrere dalla data di fabbricazione/ Avdel recomienda utilizar sus piezas estañadas antes de 24 meses desde la fecha de su fabricación.



ø	Y		🌀		øA	C	øD	E	F	Nm max. ¹⁾	Fasteners per pod/ Nombre de rivets par chargeur/ Niete pro Magazin/ Rivetti per carica- tore / Uds./carga	Part No/ref
	nom.	min.	max.	min.								
M2.5 x 0.45	0.8	2.0	2.70	2.80	4.05	5.5	2.69	3.4	8.0	0.85	36	01117-06555
						6.0		3.9	8.5		34	01117-06560
						7.0		4.9	9.5		30	01117-06570
						8.0		5.9	10.5		27	01117-06580
						9.0		5.9	11.5		25	01117-06590
M3 x 0.5	0.8	2.0	3.30	3.40	4.85	5.5	3.28	3.4	8.0	1.38	36	01117-07055
						6.0		3.9	8.5		34	01117-07060
						7.0		4.9	9.5		30	01117-07070
						8.0		5.9	10.5		27	01117-07080
						9.0		5.9	11.5		25	01117-07090

all dimensions in mm / en millimètres / alle Maße in mm / in millimetri / en milímetros

1) As tested in 1.5 mm thick glass fibre reinforced board to specification NEMA-L11-1971 Type FR4.

Testé dans circuit imprimé fibre / époxy 15/10 selon NEMA-L11-1971 type FR4.

Getestet in 1,5 mm starker glasfaserverstärkter Leiterplatte nach Spezifikation NEMA-L11-1971 Typ FR4.

Testato in un circuito rinforzato con fibra di vetro di 1,5 mm come da specifica NEMA-L11-1971 tipo FR4.

Testado en una tarjeta reforzada con fibra de vidrio de 1,5 mm.



www.avdel-global.com

© 2010 Infastech

Avsert® is a trademark of Avdel UK Limited

05d.2007

Data shown is subject to change without prior notice as a result of continuous product development and improvement policy.
 Your local Avdel representative is at your disposal should you need to confirm latest information.