

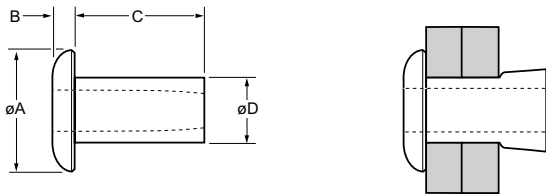
Chobert® 1162



For installation information please refer to the tooling overview and manuals on our website www.avdel-global.com.
 Pour les conditions de pose, merci de vous référer à la description de l'outil et aux manuels disponibles sur notre site Web.
 Angaben zur Verarbeitung entnehmen Sie bitte der Geräteübersicht und den Betriebsanleitungen auf unserer Website.
 Per informazioni sull'installazione preghiamo consultare i manuali e la panoramica degli attrezzi sul nostro sito web.
 Para ver información sobre máquinas de colocación, consulte nuestra página web, apartados visión general de máquinas y manuales.

English	Français	Deutsch	Italiano	Español
Low profile head	Tête profil bas	Flachkopf	Testa basso profilo	Cabeza perfil bajo
Aluminium alloy* (2.5 % Mg)	Alliage d'aluminium* (2.5% Mg)	Aluminium* (2.5 % Mg)	Lega di alluminio* (2.5% Mg)	Aluminio* (2.5% Mg)
Natural	Brut	Blank	Nessuna finitura	Natural

*: AA 5052 DIN 1725 AlMg2.5 Werkstoff 3.3523



ø					øA	B	C	øD		Fasteners per pod/ Nombre de rivets par chargeur / Niete pro Magazin/ Rivetti per carica- tore / Uds./carga	Part No/ref		
	nom.	min.	max.	min.								max.	± 0.3
3.2 (1/8")					6.4	1.1	3.28	3.24	0.6		71	01162-00404	
		1.57	3.17				4.88				51	01162-00406	
		3.17	4.75				6.45				39	01162-00408	
		4.75	6.35	3.28			3.34				8.05	32	01162-00410
		6.35	7.92				9.63				27	01162-00412	
		7.92	9.52				11.20				23	01162-00414	
		9.52	11.10				12.78				21	01162-00416	
4.0 (5/32)					7.9	1.3	4.67	4.05	1.0		47	01162-00506	
		1.57	3.17				5.46					01162-00507	
		3.17	4.75				6.27				38	01162-00508	
		4.75	6.35	4.09			4.16				7.85	31	01162-00510
		6.35	7.92				9.45				27	01162-00512	
		7.92	9.52				11.05				23	01162-00514	
		9.52	11.10				12.62				21	01162-00516	
4.8 (3/16")					9.8	1.6	4.37	4.82	1.5		50	01162-00605	
		1.57	3.17				5.66				38	01162-00607	
		3.17	4.75				7.24				33	01162-00609	
		4.75	6.35	4.85			4.93				8.84	28	01162-00611
		6.35	7.92				10.41				24	01162-00613	
		7.92	9.52				12.01				21	01162-00615	
		9.52	11.10				13.59				19	01162-00617	
		11.10	12.70				15.19				17	01162-00619	

all dimensions in mm / en millimètres / alle Maße in mm / in millimetri / en milímetros

1) typical values / valeurs moyennes / typische Werte / Valori tipici / resistencias máximas recomendadas



www.avdel-global.com

© 2011 Infastech

Chobert® is a trademark of Avdel UK Limited

06.2011

Data shown is subject to change without prior notice as a result of continuous product development and improvement policy.
 Your local Avdel representative is at your disposal should you need to confirm latest information.