

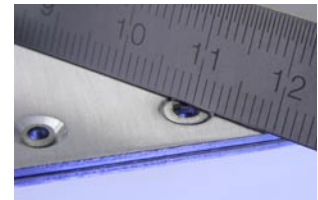
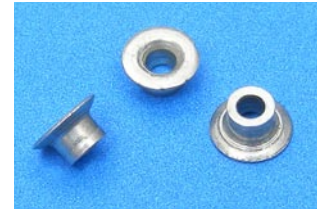
Double Flush Chobert® Speed Fastening® Rivet

For exceptionally thin sheet materials

The Double Flush Chobert® rivet is a Speed Fastening® rivet with countersunk head for use in exceptionally thin sheet materials. Based on the Avdel Chobert® design, the "Double Flush" is an ideal solution for fastening in the electronics industry and other applications where rear protrusion and rivet stem loosening are non preferred.

The "Double Flush" is placed into sheets that have countersunk bores on both sides. After installation, the placed rivet forms a flush fastening on both the front and rear of the application.

Avdel Speed Fastening® Systems are uniquely designed for rapid, reliable component assembly. At the end of each installation cycle, the next fastener is automatically delivered to the nose of the tool ready to repeat the assembly process.



Features and Benefits

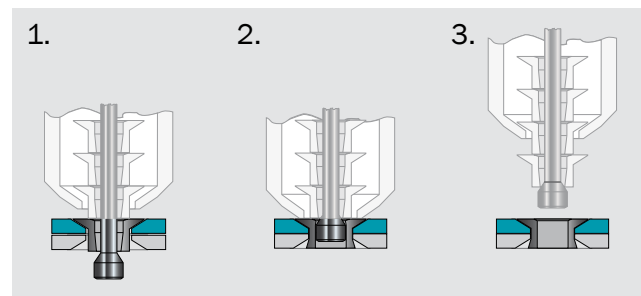
- Flush surface on both sides of the joint*
- Reduces excess space requirements within the chassis
- Common hole form can be used throughout the chassis design to reduce complexity
- Can be installed from either direction if accessible
- Expands radially in the material during installation
- Provides superior joint strength when compared to competitive technologies
- One-piece fastener eliminates potential stem fall out that can cause electrical problems
- Speed Fastening® rapid installation with magazine or bowl feed fasteners

* Rear sheet tail protrusion of installed fastener up to 0.5 mm is permissible

Specifications

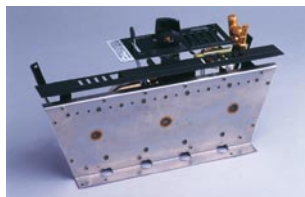
Size	3.2 mm
Material	Steel
Surface finish	Zinc, clear passivated
Grip ranges	2.00 - 2.67 mm 2.41 - 2.92 mm
Shear strength typical	1.018 kN
Tensile strength typical	1.519 kN

Typical Placing Sequence



Assembly Applications

- Computer chassis
- Electronic devices and components
- Automotive applic.
- Domestic appliances
- HVAC
- General thin sheet fabrications where material cost and blindside space is at a premium



Installation Tools

The "Double Flush" is installed securely in seconds with standard Speed Fastening® tools.



www.avdel-global.com

Chobert® and Speed Fastening® are registered trademarks of Avdel UK Limited.

Data shown is subject to change without prior notice as a result of continuous product development and improvement policy. Your local Avdel representative is at your disposal should you need to confirm latest information.

Avdel UK Limited
Pacific House, 2 Swiftfields
Welwyn Garden City, Hertfordshire AL7 1LY
Tel. +44 (0)1707 292-000 · Fax -199
enquiries@infastech.com

© 2010 Infastech, Rev. 06.2010

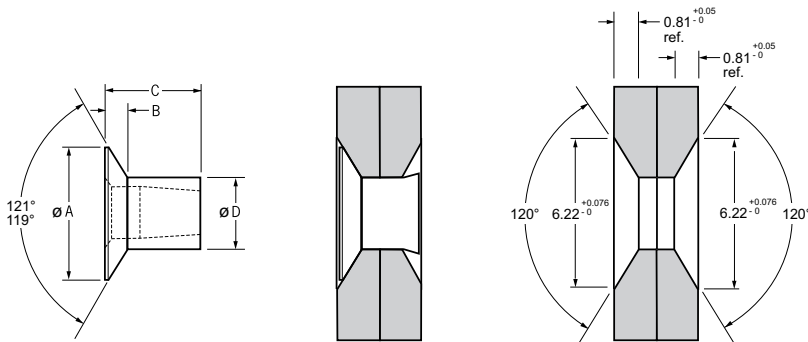
page 1/2

Double Flush Chobert® 1110



English	Français	Deutsch	Italiano	Español
120° Countersunk	120° Tête fraisée	120° Senkkopf	120° Testa svasata	120° Cabeza avellanada
Low carbon steel*	Acier bas carbone*	Stahl*	Acciaio a basso tenore di carbonio*	Acero bajo en carbono*
Zinc plated	Revêtement zingué	Verzinkt	Zincato	Zincado
Clear trivalent passivated	Passivation claire trivalente	Klar chromatiert, Cr6-frei	Passivazione chiara trivalente	Pasivado claro trivalente

*: EN 10263-2 C8C (DIN 10263-2 C8C, Qst 34-3)



Rear sheet tail protrusion of installed fastener is application dependent - up to 0.5 mm is permissible.
 Le dépassement en face arrière après pose dépend de l'application - possible jusqu'à 0,5 mm.
 Der Bauteilüberstand des gesetzten Verbinders auf der Blindseite ist applikationsabhängig - bis zu 0,5 mm ist zulässig.
 L'entità della sporgenza posteriore del rivetto installato è dipendente dall'applicazione. Fino a 0,5 mm è ammessa.
 El remache una vez colocado, sobresale por la parte trasera de la chapa hasta un máximo de 0,5mm permitidos.

Ø	Ø		Ø		ØA	B	C	ØD	kN ¹⁾	kN ¹⁾	Fasteners per pod/ Nombre de rivets par chargeur/ Niete pro Magazin/ Rivetti per caricatore/ Uds./carga	Part No/ref
	min.	max.	min.	max.								
3.2 (1/8")	2.00	2.67	3.28	3.33	5.46	0.76	2.49	3.25	1.02	1.52	120	01110-11708
	2.41	2.92				2.79						

all dimensions in mm / en millimètres / alle Maße in mm / in millimetri / en milímetros

1) typical values / valeurs moyennes / typische Werte / Valori tipici / resistencias máximas recomendadas

Installation Equipment / Equipement de pose / Nietausrüstung / Installazione attrezzatura / Equipo de instalación

Description / description / Beschreibung / descrizione / descripción	Part No / ref	Ø	
		min.	max.
Nose equipment / ensemble de nez / Mundstück / equipaggiamento / boquilla	07537-03100		
Mandrel / aiguille / Nietdorn / mandrino / Mandril			
Standard / standard / Standard / standard / estándar	07150-08004	3.28	3.33
1. oversize / 1. surdimensionnée / 1. Übermaß / 1. maggiorazione / 1. sobremedida	07150-08104	3.38	3.43
2. oversize / 2. surdimensionnée / 2. Übermaß / 2. maggiorazione / 2. sobremedida	07150-08204	3.53	3.58
Follower spring / ressort d'aiguille / Nietdornfeder / molla / muelle	07271-06630		

all dimensions in mm / en millimètres / alle Maße in mm / in millimetri / en milímetros

For more information please contact your local Avdel representative.



www.avdel-global.com

Avdel UK Limited
 Pacific House, 2 Swiftfields
 Welwyn Garden City, Hertfordshire AL7 1LY
 Tel. +44 (0)1707 292-000 · Fax -199
 enquiries@infastech.com

© 2010 Infastech, Rev. 06.2010

Chobert® and Speed Fastening® are registered trademarks of Avdel UK Limited.

page 1/2

Data shown is subject to change without prior notice as a result of continuous product development and improvement policy.
 Your local Avdel representative is at your disposal should you need to confirm latest information.