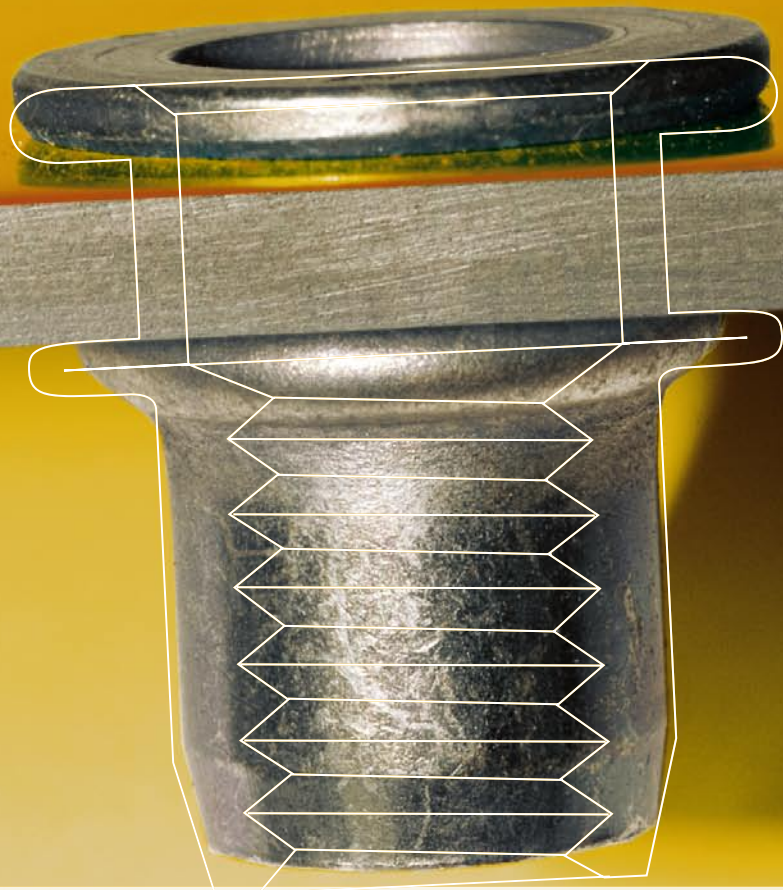




Selection Guide

Threaded Inserts



Since 1922



Avdel[®]

Since 1936

iForm[™]

2010

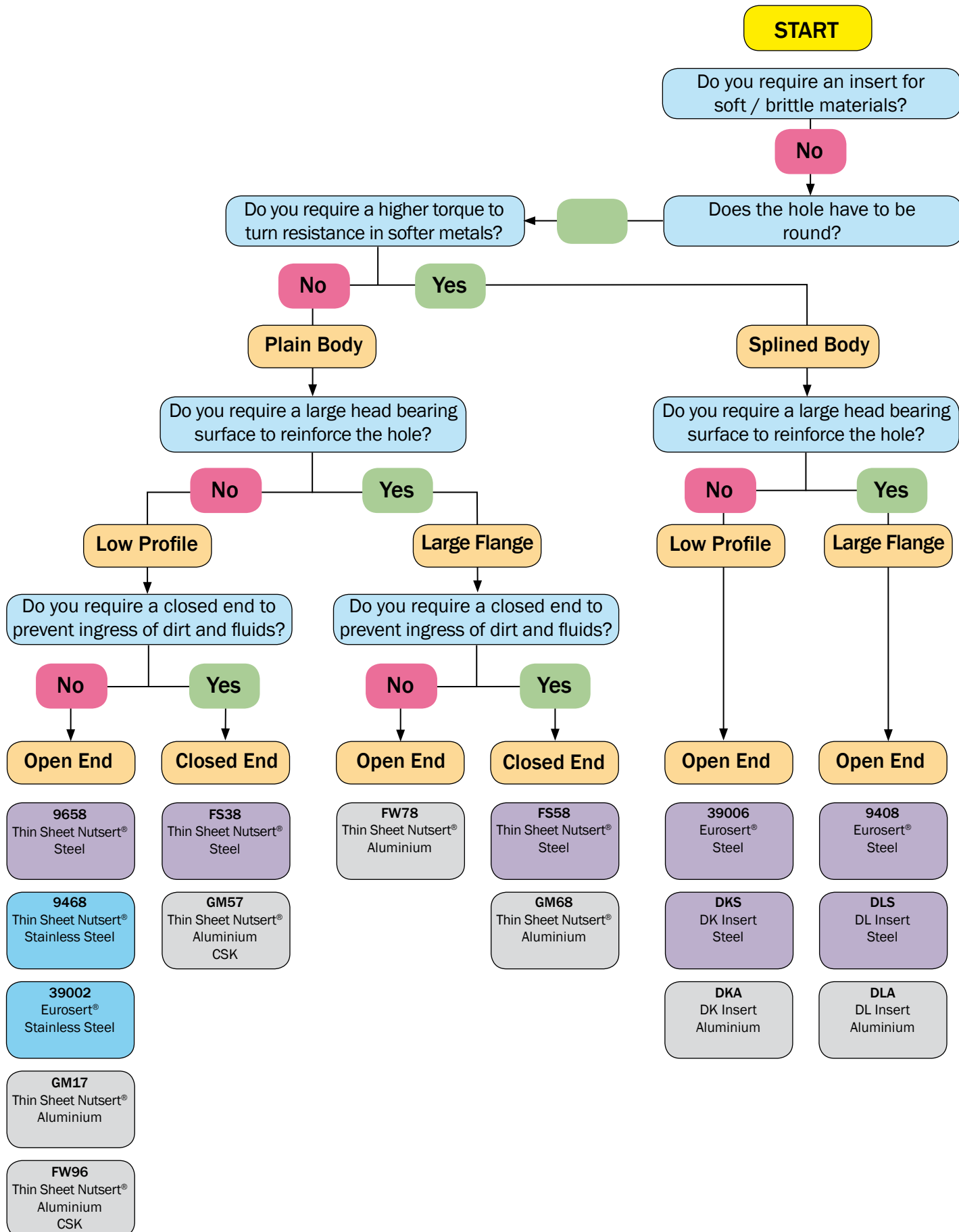


infastech[™]

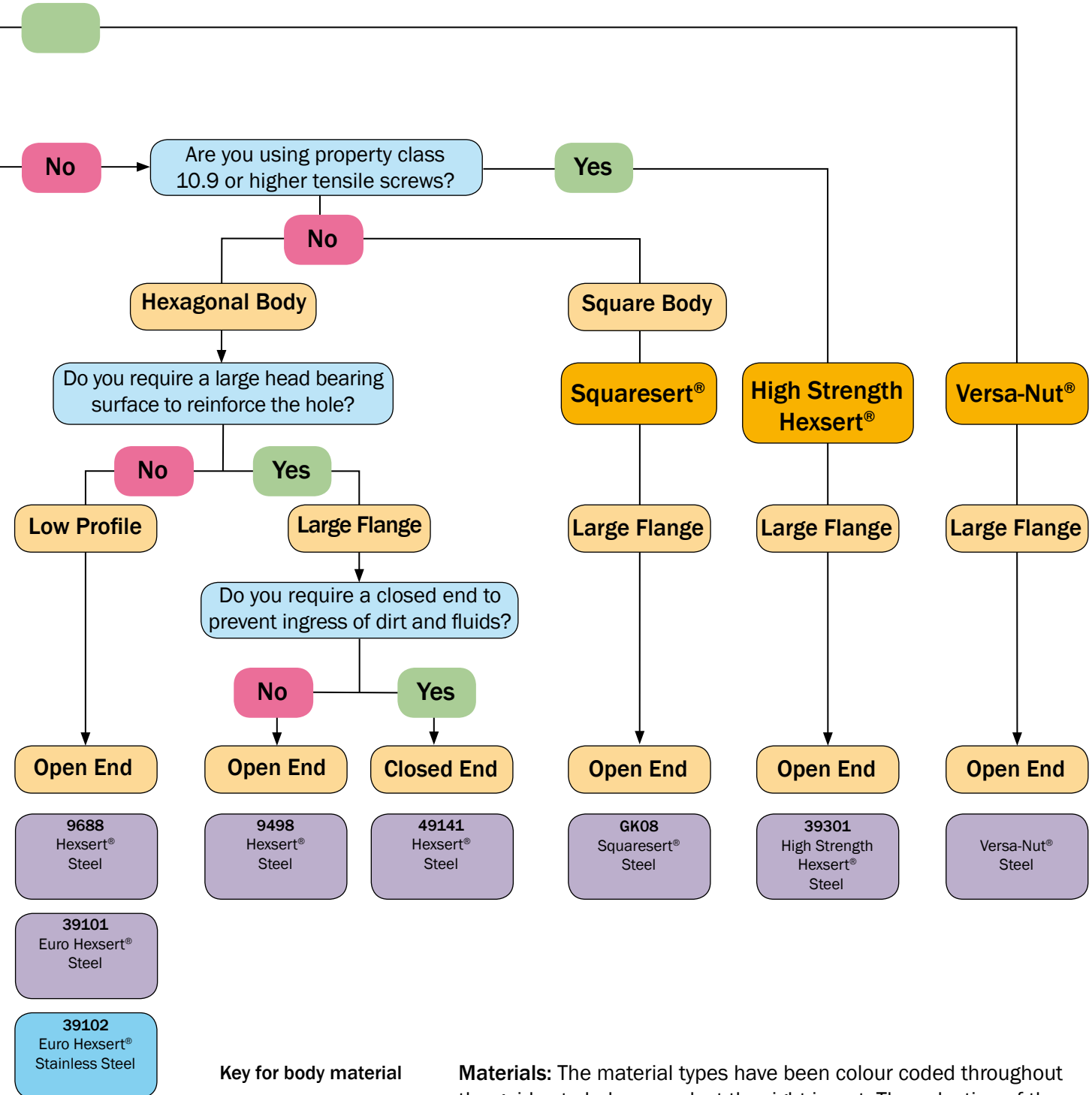
Our Technology, Your Success

Avdel Threaded Inserts

A quick, reliable low cost way to insert high quality load bearing threads into weak or thin gauge materials.



This selection guide is designed to help show you which inserts may be the most suitable for your application. An Avdel Applications Engineer is available to answer any questions you may have. This guide does not include the full range of Avdel products and for more information on specialist products please see the appropriate brochure or our website www.avdel-global.com. Our design department is able to create variations on all our products to suit your individual needs quickly and efficiently.



- Key for body material**
- Aluminium Alloy
 - Steel
 - Stainless Steel

Materials: The material types have been colour coded throughout the guides to help you select the right insert. The selection of the material depends on the application requirements, e.g. corrosion resistance, strength, temperature, electrical conductivity.

Finishes: Avdel can offer special finishes for your application on all Avdel fasteners. For more information please contact an Avdel Representative.

Avdel Threaded Inserts

Benefits of assembly

Avdel threaded inserts and installation tools provide a quick, reliable and low cost system of inserting high quality, load bearing threads. The inserts offer many benefits over weld nuts, self-tapping screws, pressed inserts and nuts & bolts.

Key user benefits include:

- Blind sided assembly
- Reliable and secure thread installation
- No damage to surface coatings
- Reduced rework and wastage
- Lower cost of installation
- Suitable for use in stamped or drilled holes
- Designed for automation

Range Overview

Splined Body – Eurosert®



Improves torque-to-turn resistance in softer materials such as aluminium when compared to plain body inserts.

Hexagonal Body – Hexasert®



Improves torque-to-turn in components via form lock when compared to round and splined inserts.

Square Body – Squaresert®



Improves torque-to-turn resistance in components via form lock due to even greater contact surface compared to round and splined inserts.

Versa-Nut®



Slotted body forms four legs when placed. Extra large blind side bearing area. For use in composites and plastics.

Supersert®



Can be used in thick materials including blind holes. Mechanical locking mechanism.

Large Flange



Provides a large load bearing surface to reinforce the hole and prevent push through.

Low Profile



Allows near flush installation and clamp up without the need to prepare special holes.

Countersunk – Nutsert®



Allows flush installation and secure clamp up.

Closed End – Nutsert®



Prevents the ingress of dirt and fluids into thread.

Customised Designs



We can design and manufacture threaded inserts with a wide variety of forms and finishes:

- Special surface coatings
- Varying grip ranges, flange dimensions and nut lengths
- Closed end and sealed inserts

Avdel also offers threaded fasteners for use in Avdel threaded inserts.



www.avdel-global.com

Avdel UK Limited
Pacific House, 2 Swiftfields
Welwyn Garden City, Hertfordshire AL7 1LY
Tel. +44 (0)1707 292-000 · Fax -199
enquiries@infastech.com

© 2010 Infastech

Eurosert®, Hexasert®, Nutsert®, Squaresert®, Supersert®, and Versa-Nut® are trademarks of Avdel UK Limited.

10.2009

Data shown is subject to change without prior notice as a result of continuous product development and improvement policy. Your local Avdel representative is at your disposal should you need to confirm latest information.